

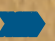


KEMPER®

Deep Roots. High Expectations.™

-  **EMERGE™ SERIES**
Premium Semi-Custom Cabinetry
-  **CHOICE™ SERIES**
Semi-Custom Cabinetry
-  **ECHO™ SERIES**
Value Semi-Custom Cabinetry

Styles, product availability and construction may vary slightly from those shown in this book due to material availability and/or design evolution. Specifications are subject to change without notice. For more details, check with your designer.

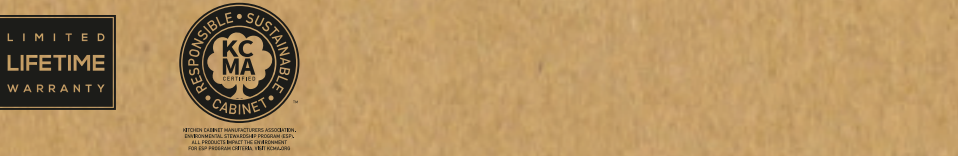
Product photography and illustrations have been reproduced as accurately as printing technologies permit. To ensure highest satisfaction, we strongly recommend you view an actual sample for best color, wood grain and finish representation.

Kemper® is a certified brand in the Kitchen Cabinet Manufacturers Association (KCMA) Environmental Stewardship Program. The program recognizes companies that demonstrate an ongoing commitment to environmental practices and sustainability.

Kemper® has a Limited Lifetime Warranty.
For terms and conditions, please visit: kempercabinets.com/warranty

Cabinet Care and Cleaning Instructions: masterbrand.com/care-and-cleaning

Front Cover Image: KINZIE PureStyle™ Maritime & Icy Avalanche



- 5-Piece construction.***

As opposed to Thermofoil, which is a routed slab product, PureStyle boasts a 5-piece construction that emulates the look of painted wood cabinets.
- Continuous wrap.***

Each component of the 5-piece construction is continuously wrapped, reducing the potential for moisture to enter and delamination to occur.
- Exceptional finish.**

PureStyle offers a velvety smooth finish that is color consistent and won't crack or craze like painted wood products.
- Unmatched benefits.**

With benefits exceeding those of painted wood, dollar for dollar, PureStyle delivers maximum value.

**Slab drawer fronts do not feature 5-piece construction and therefore are not a continuously wrapped component.*

What is PureStyle?

- Stable and durable.**

PureStyle combines the durability of laminate and the beauty of paint. It is more stable than painted wood products, which contract and expand in changing environmental conditions.
- A proven performer.**

Like all Kemper® Echo™ products, PureStyle has been subjected to rigorous KCMA performance testing and has met or exceeded all certification requirements.
- Environmentally safe.**

The wrap material used for PureStyle is a cellulose-based product that is environmentally safe and contains no toxic substances. Substrates are Medium Density Fiberboard (MDF), an engineered product made from wood that comes from forests with eco-sustainable systems.
- On-trend and in demand.**

PureStyle offers crisp, clean details and a quality finish. The added benefits of color consistency and a velvety smooth touch mean PureStyle delivers fashion without the fuss.



ECHO™ SERIES



GUIDE TO PURESTYLE™



Antrim

- Partial Overlay
- Flat Panel Door
- Slab Drawer Front



Kinzie

- Full Overlay
- Flat Panel Door
- 5-Piece Drawer Front



Optional Slab Drawer Front



Warren

- Full Overlay
- Flat Panel Mitered Door
- 5-Piece Mitered Drawer Front



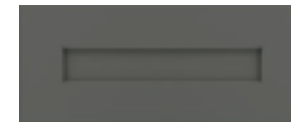
Berg

- Partial Overlay
- Flat Panel Mitered Door
- 5-Piece Mitered Drawer Front



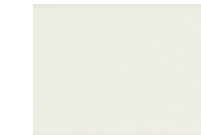
Marimac

- Full Overlay
- Flat Panel Door
- Slab Drawer Front

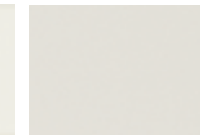


Optional 5-Piece Drawer Front

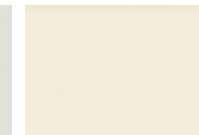
Color Options



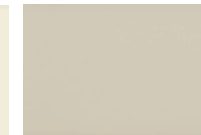
White



Icy Avalanche



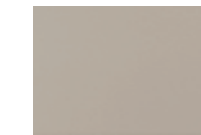
Coconut



Egret



Limestone



Cloud



Moonstone



Maritime

